



# GAT MONTHLY MEMBERSHIP PROGRESS REPORT

Results as of: 4/30/2024

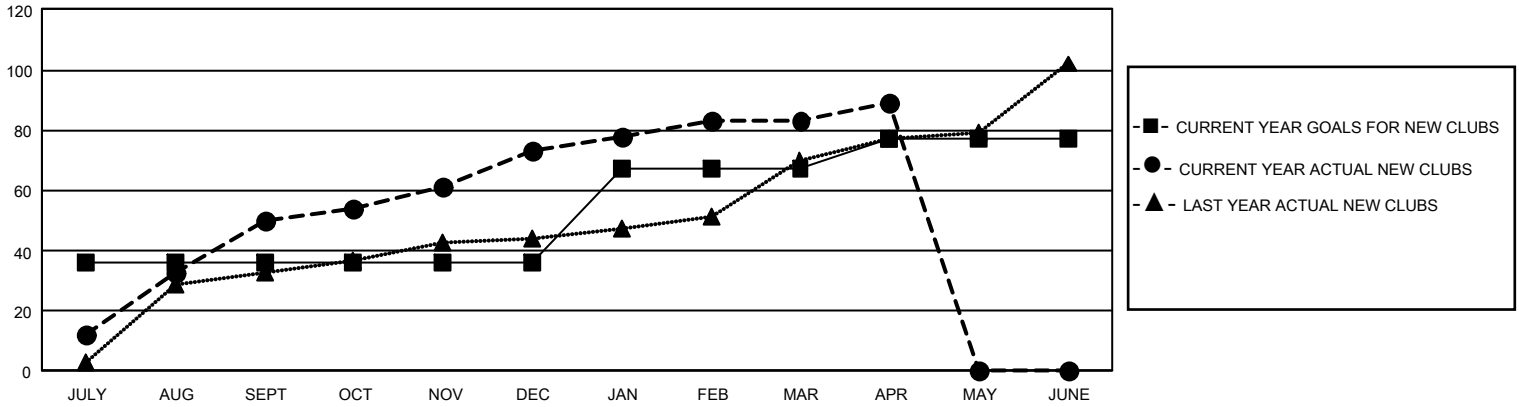
## GMT Constitutional Area 6 - I, Group D

REPORT DOES NOT INCLUDE CLUBS IN UNDISTRICTED AREAS.

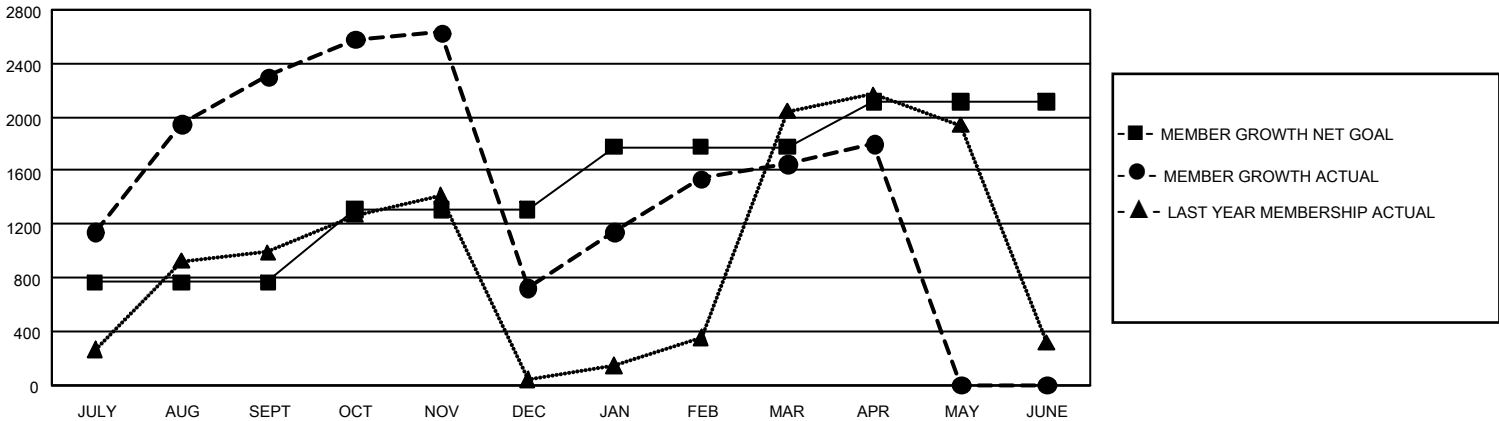
Clubs			
RESULTS FOR 2023-2024			
QUARTER	NEW CLUB GOAL	NEW CLUBS	DROPPED CLUBS
JULY/AUG/SEPT	108	50	19
OCT/NOV/DEC	0	23	54
JAN/FEB/MAR	93	10	8
APR/MAY/JUNE	30	6	2

Members			
RESULTS FOR 2023-2024			
QUARTER	MEMBER GROWTH NET GOAL	MEMBER GROWTH ACTUAL	DROPPED MEMBERS ACTUAL (including transfers)
JULY/AUG/SEPT	765	3,877	1,292
OCT/NOV/DEC	545	2,074	3,285
JAN/FEB/MAR	465	1,529	370
APR/MAY/JUNE	340	373	182

GOALS AND ACTUAL NEW CLUBS CUMULATIVE



GOALS AND ACTUAL MEMBERS CUMULATIVE



<b>DROPPED CLUBS: 83</b>	737 CLUBS OF 1,105 ADDED 1 OR MORE NEW MEMBERS	<b>GENDER DISTRIBUTION</b>	
		MALE 28,401 (75.18%) FEMALE 9,365 (24.79%) NON BINARY 1 (0.00%) PREFER NOT TO ANSWER 9 (0.02%)	
<b>DROPPED MEMBERS</b>		<a href="#">CLICK HERE FOR CUMULATIVE MEMBERSHIP DATA</a>	
DECEASED 85 CLUB CANCELLED 1,514 OTHER 3,529 <b>TOTAL 5,128</b>	TOTAL FAMILY UNIT MEMBERS 14,165 FAMILY MEMBERS PAYING HALF DUES 8,240		